

## SCIENCE : Life Processes

### 55. Multiple choice questions.

- 1) The kidneys are a part of .....
- Nutrition
  - Respiration
  - Excretion
  - Transportation

Ans : (c) Excretion

### 2) The Xylem in plants are responsible for.....

- Transport of water
- Transport of food
- Transport of amino acids
- Transport of oxygen.

Ans: (a) Transport of water

### 3) The autotrophic mode of nutrition requires.....

- Carbon dioxide and water
- Chlorophyll
- Sunlight
- All of the above

Ans(d).

### 4) Autotrophic organisms include.....

- Bacteria and virus
- Bacteria and fungi
- Green plants and some bacteria
- Green plants and all bacteria

Ans (c) Green plants and some bacteria

### 5) A gland which is not associated with the alimentary canal is.....

- Liver
- Salivary glands
- Pancreas
- Adrenal

Ans: (d) Adrenal

### 6) Which of the following is chiefly digested in the stomach?

- Carbohydrates
- Protein
- Lipids
- Fat

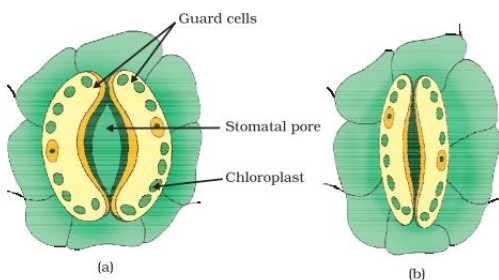
Ans: (b) Protein

### 56) Where do plants get raw materials for photosynthesis?

Ans: Plants require carbon dioxide from the atmosphere, water from groundwater and solar energy from the sun.

### 57) Draw Open and closed stomatal pore

Ans:-



### 58) What criteria can determine if something is alive or not?

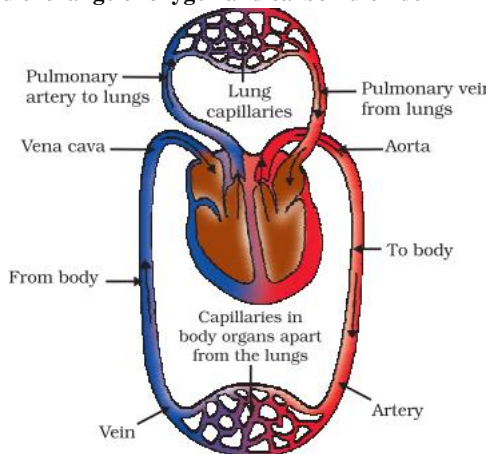
Ans Whether an organism is alive or not should match the following characteristics:

- \* Moving on its own.
- \* Food is required to meet energy needs and nutrition.
- \* Respiration
- \* Response to the changes taking place in the environment.
- \* Has growth and development.
- \* Removal of metabolic waste from the body.

### 59) Mentions outside raw materials used by organisms.

Ans: All organisms obtain oxygen, water and food from the outside environment. These are the raw materials. Plants need raw materials such as carbon dioxide and water to prepare their food by photosynthesis.

### 60) Draw Schematic representation of transport and exchange of oxygen and carbon dioxide



### 61) Mention the role of acid in the stomach.

Ans: Hydrochloric acid is found in our stomach. This kills the harmful germs which enter our body via food. The acid also activates the pepsin enzyme for protein digestion.

### 62) What is the function of digestive enzymes?

Ans: The digestive enzymes increase the process of breaking down complex molecules into simpler ones and absorbable molecules so that body can facilitate their absorption.

### 63) How does the small intestine absorb digested food?

Ans: The innermost layer of the small intestine is the finger-like projections called villi which increase the absorption surface area. These villi also comprise the blood capillaries to aid in the absorption of simple molecules from food.

### 64) What advantages does a terrestrial organism have over an aquatic organism in obtaining oxygen for respiration?

(Contd....)