

SCIENCE : Life Processes

32. What are the methods used by plants to get rid of excretory products?

Ans:- (.....Contd)

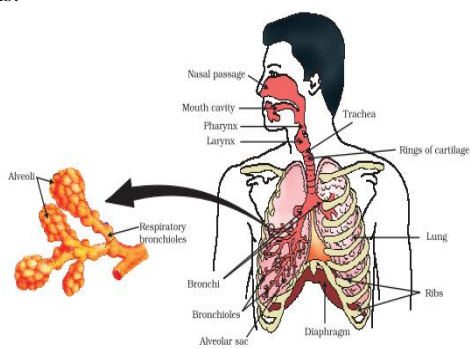
Cellular vacuoles: Some waste products accumulate in vacuoles and eventually become resin and gum.

Storage in plant parts: Organic waste is stored in leaves and bark.

Secretion: Plants also secrete waste. Plants also excrete oxygen, a byproduct of photosynthesis.

33) Draw the Human respiratory system

Ans:-



34) How is the amount of urine produced regulated?

Ans: The amount of urine produced depends on the amount of excess water and dissolved waste present in the body. Other factors may be the environment and the ADH hormone, which regulates the production of urine.

35) The kidneys in human beings are a part of the system for

- (a) nutrition
- (b) respiration
- (c) excretion
- (d) transportation

Ans: (c) excretion

36) The xylem in plants is responsible for

- (a) transport of water
- (b) transport of food
- (c) transport of amino acids
- (d) transport of oxygen

Ans: (a) transport of water

37) The autotrophic mode of nutrition requires

- (a) carbon dioxide and water
- (b) chlorophyll
- (c) sunlight
- (d) all of the above

Ans: (d) all of the above

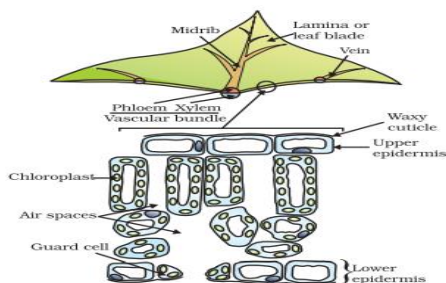
38) The breakdown of pyruvate to give carbon dioxide, water, and energy takes place in.....

- (a) cytoplasm.
- (b) mitochondria
- (c) chloroplast
- (d) nucleus

Ans: (b) mitochondria

39) Draw the Cross-section of a leaf

Ans:-



40) How are fats digested in our bodies? Where does this process take place?

Ans: The small intestine is the place for the complete digestion of carbohydrates, fats and proteins. It receives the secretions of the liver and pancreas for this purpose.

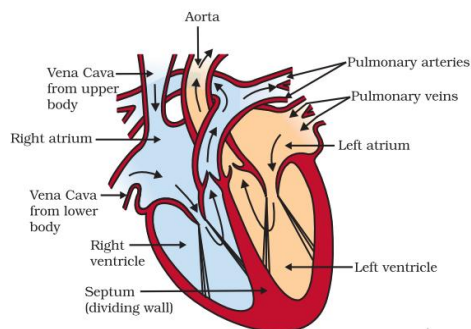
The food coming from the stomach is usually acidic in nature, and it has to be made alkaline so that pancreatic enzymes can act on it. Bile juice produced in the liver accomplishes this process.

Fats are usually present in the intestine in the form of larger globules, which makes it difficult for enzymes to act on them. The bile salts help in breaking down larger globules into smaller globules. The pancreas helps in secreting pancreatic juice, which contains enzymes like trypsin for digesting proteins and lipase for breaking down emulsified fats.

The walls of the small intestine contain glands, which secrete intestinal juice. The enzymes present in it finally convert the proteins to amino acids, complex carbohydrates into glucose and finally, fats into fatty acids and glycerol.

41) Draw the Schematic sectional view of the human heart

Ans:



(Contd...)