



Yashas Mitta

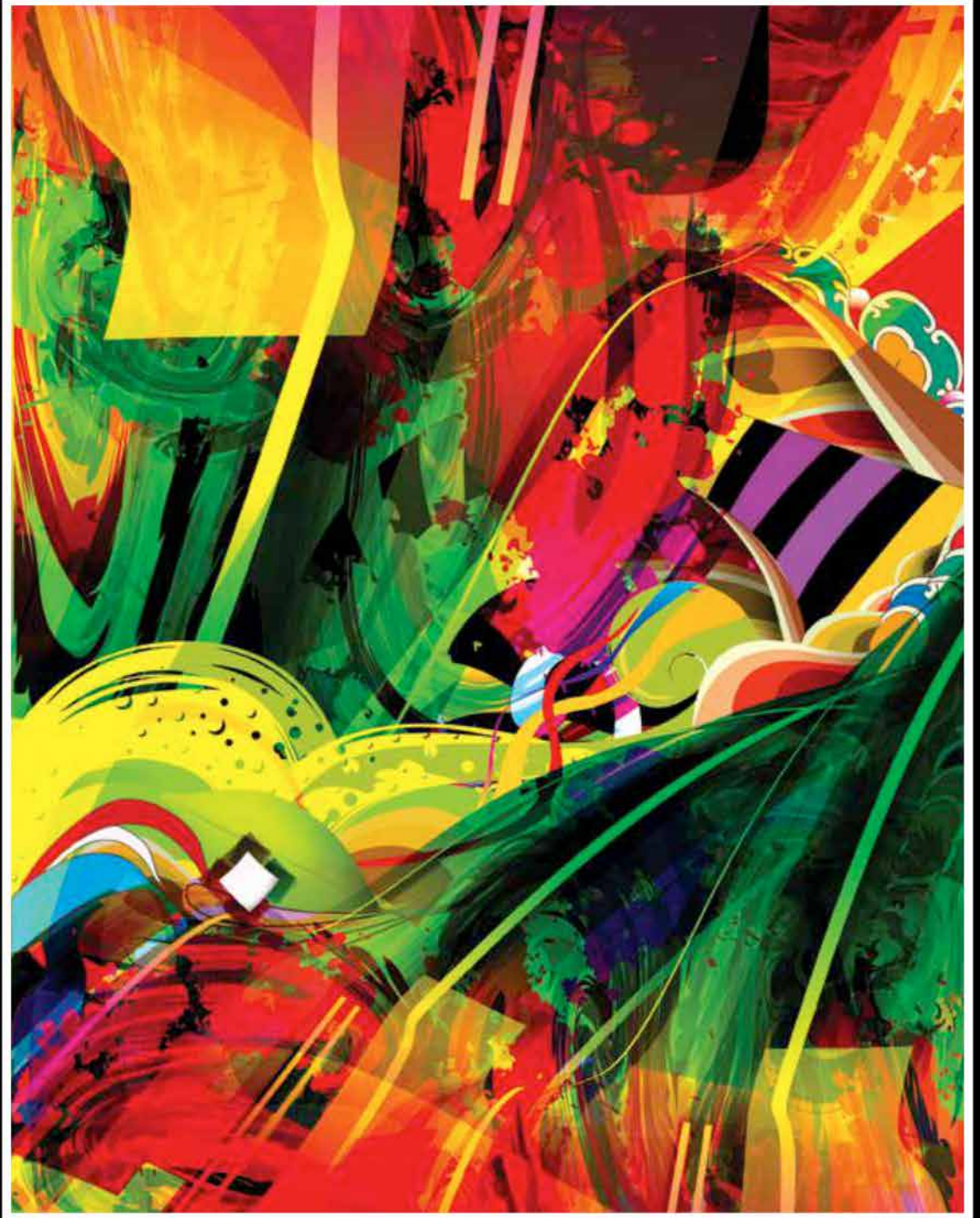
Yashas is a creative strategist by day and a digital artist by night. He is a self-confessed Adobe Illustrator addict and spends time experimenting with it.

Tools used

Adobe Illustrator

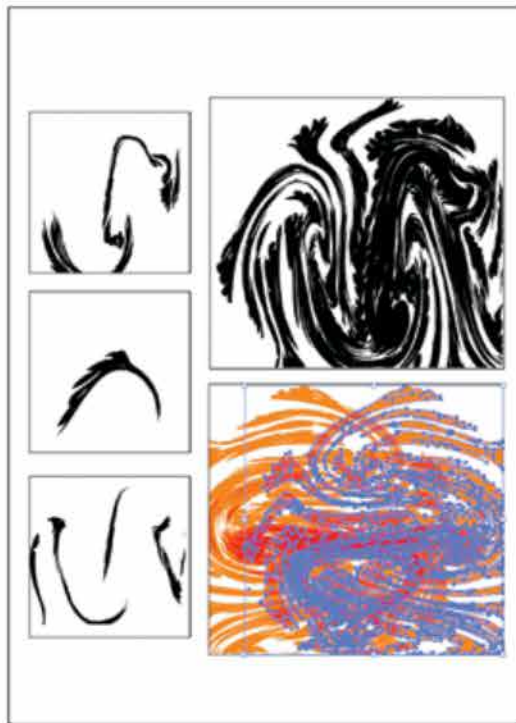
Brief

To bring together the chaos of hell and the calm of heaven together. To find the space where the two coexist.



EtherealFANTASY

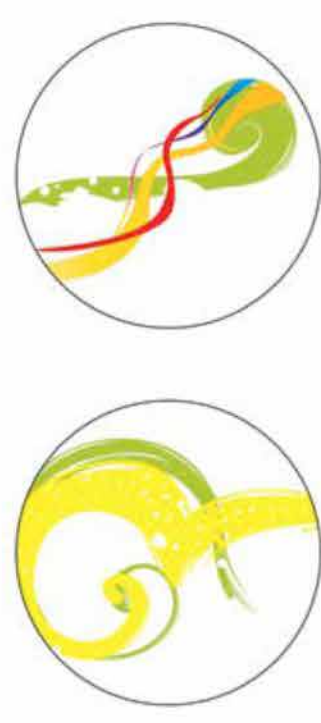
Heaven is not any illusionary space. Rather, it is this space where we dwell. It enables us and gives us the freedom to do what we want to. But we misuse it and turn it into the hell that finally awaits our destiny. This philosophy gives way to digital artist Yashas's creation.



01 Created colour splashes with certain brush strokes, outline stroked them and replicated and modified them to create abstract yet contained forms. Interestingly, these forms produced exciting elements that would help in the final composition.



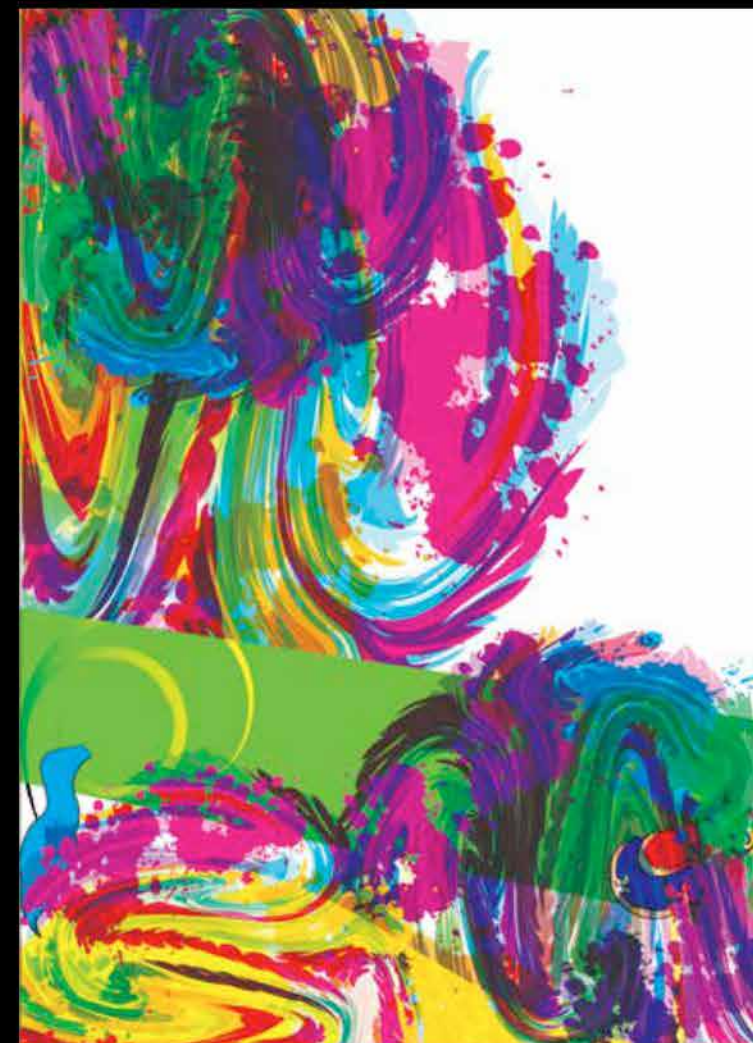
03 Gave the various elements different colour codes to make them look like colour splashes or colour blots. Start placing them on the canvas as per the planned composition.



02 Created the main two elements that convey the message. The wave breaking through the ribbons, symbolizing one's freedom against all things conventional and all limitations. And connector strokes of elements that would come to use later in the artwork.



04 Replicated patterns, forms, colours etc. yet made them look different and new with every replication. Created some clean forms and some messy ones so that they make different patterns. Used different colours for every replication.



05 Transparency is a brilliant yet a hardly explored feature of Illustrator. Used Overlay extensively for replicating the forms. Placed regular and random shapes of colour like shown in this image to bring a distinct tone to the elements.



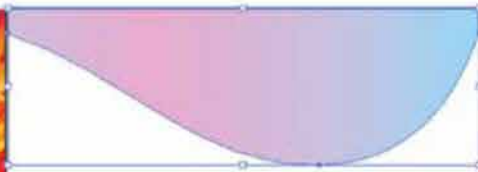
06 Used and modified the elements previously created. Placed the elements that symbolize different aspects as per the initial thought.



07 Placed one of the most important elements of this artwork, the staircase/elevator that symbolizes climbing down rather than climbing up.



08 Overlaying shapes is one thing, overlaying patterns is another thing. Applied the same concept of overlaying on forms with the patterns. One needs to spend time on just getting the pattern right in tune with the intention of the form so that the exact perspective can be put in place. Created a form that took a right angle, smoothed and contained the entire mess underneath it.



09 Continued pattern and form overlay. Drew forms that were interrupted and were cut out just to show the exact opposite of the bottom in the previous step, which is messier.



10 Time for final touches. Used gradients on random forms to give the final depth and colour tones needed. Arrived at the final image ←