

FOR SANITARY MAIN PROPOSED OUTSIDE OF PUBLIC STREET ALIGNMENTS, THE PROPOSED INVERT ELEVATIONS ARE PROPOSED AT OR BELOW EXISTING GRADE WITH BACKFILL COVER OF 6' MINIMUM.

1" CORP., 1" TYPE K
COPPER (WITHIN ROW), 1"
CURB STOP LOCATED ON
THE ROW LINE, SEE CITY
DETAIL PLATES 1-10, 4-01,
AND 6-11.

REFER TO SANITARY & WATER - SHEET 2
REFER TO STORM SEWER - SHEET 2

THE GRADING PLAN DESIGN WILL BE NEEDED TO HELP DETERMINE WHERE THE WATER PRESSURE ZONE SPLIT(S) NEED TO BE. ALL PROPOSED ELEVATIONS OF 1180' AND HIGHER WILL BE ON THE FUTURE KALMAR SUPER HIGH LEVEL PRESSURE ZONE (HGL 1370') AND ALL PROPOSED ELEVATIONS BELOW 1180' WILL BE ON THE EXISTING NW HIGH LEVEL PRESSURE ZONE. A SITE/LOT WILL NEED TO BE IDENTIFIED ON THIS PLAN AND DEDICATED TO THE CITY OF ROCHESTER FOR THE CONSTRUCTION OF A BOOSTER STATION IN ORDER TO CREATE THE FUTURE KALMAR SUPER HIGH LEVEL PRESSURE ZONE.

DUCTILE
IRON PIPE
(ZINC
COATED)

FUTURE 12" V
EXTENSION

NEED TO CONNECT
ONE OF THESE
TWO 12" STUBS TO
THE 12" IN THE
INTERSECTION

PRELIMINARY PROPOSED WATER MAIN PIPE SIZES & LOOPING LOCATIONS. ALL PROPOSED WATER MAIN SHALL BE 8" EXCEPT FOR THOSE LABELED AS 12" & 16". THE LOCATIONS OF THE 12" & 16" WILL DEPEND ON THE LOCATION OF THE BOOSTER STATION.

EX. 12" W/M STUBS

— REFER TO SANITARY & WATER - SHEET 1
REFER TO STORM SEWER - SHEET 1

EX. 12" W/M STUB
(NORTH HALF
ROADWAY OF
KINGSBURY DR NW
STUBBED TO WEST
SIDE OF 60TH AVE)

REFER TO SANITARY & WATER - SHEET 3
REFER TO STORM SEWER - SHEET 3

— REFER TO SANITARY & WATER - SHEET 4
REFER TO STORM SEWER - SHEET 4

REVIEWED BY RPU-WATER
weneub, 5/23/2025, 11:10:39 AM

LEGEND

PROPOSED

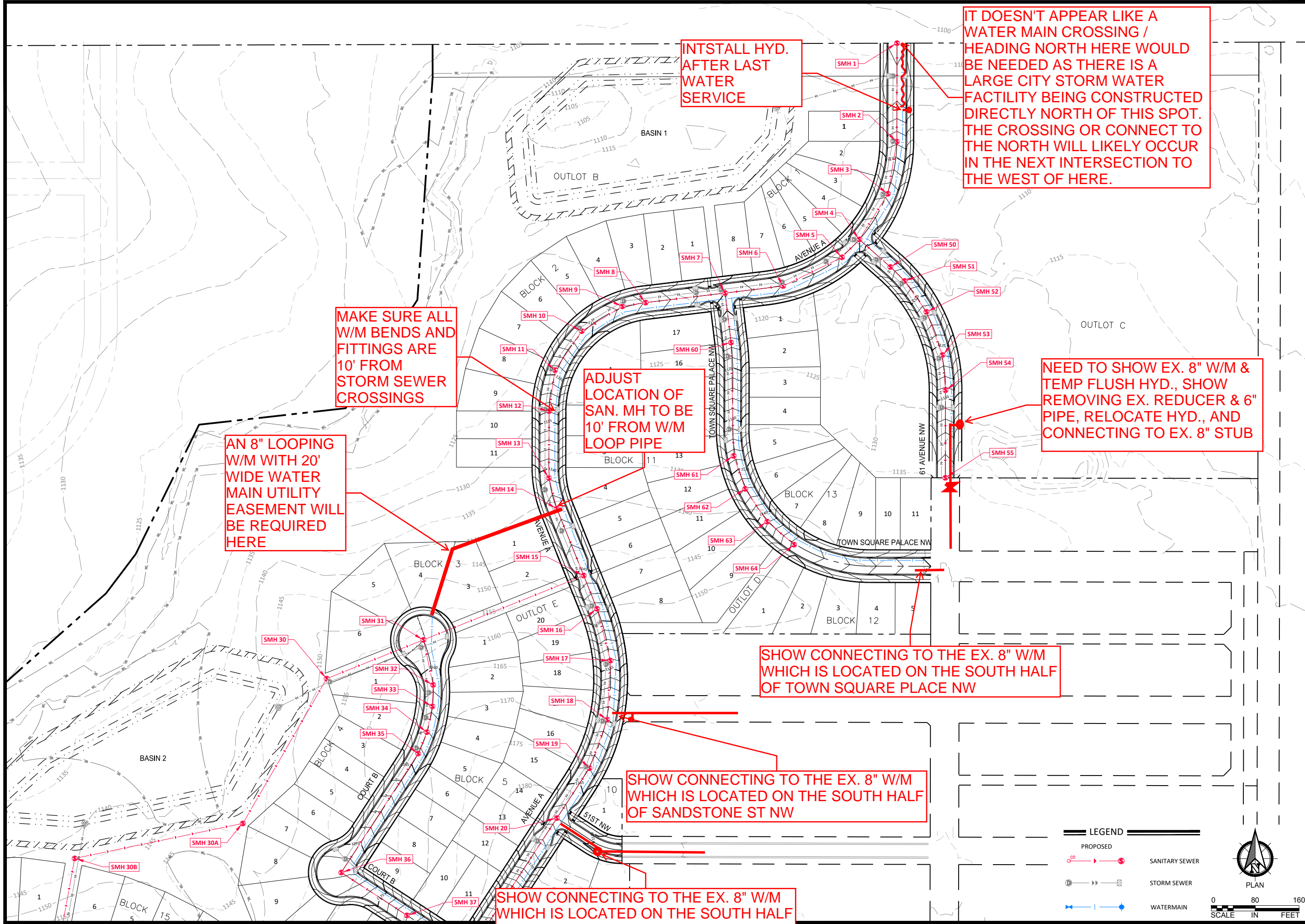
 SANITARY SEWER

 STORM SEWER

 WATERMAIN



A horizontal scale bar with three segments. The first segment is labeled '0' at the left end and '250' at the right end. The second segment is labeled '250' at the left end and '500' at the right end. Below the bar, the word 'SCALE' is centered under the first segment, 'IN' is centered under the second segment, and 'FEET' is centered under the third segment.



PH. NO. 507-634-4505
PLANS@WSE.ENGINEERING
www.wse.engineering

KASSON OFFICE
P.O. BOX 100
33 B E VETERANS
MEMORIAL HIGHWAY
KASSON, MN 55944

ROCHESTER OFFICE
1765 RESTORATION
ROAD SW
ROCHESTER, MN 55902

I hereby certify that this plan, specification or report was prepared by me or under my direct supervision and that I am a duly Licensed Professional Engineer under the laws of the State of Minnesota.

Tyler Mandler
59714 05/14/2025
Number Date

PRELIMINARY

NOT FOR

CONSTRUCTION

SANITARY & WATER - SHEET 1

PEBBLE CREEK

ROCHESTER MINNESOTA

SCALE: AS SHOWN

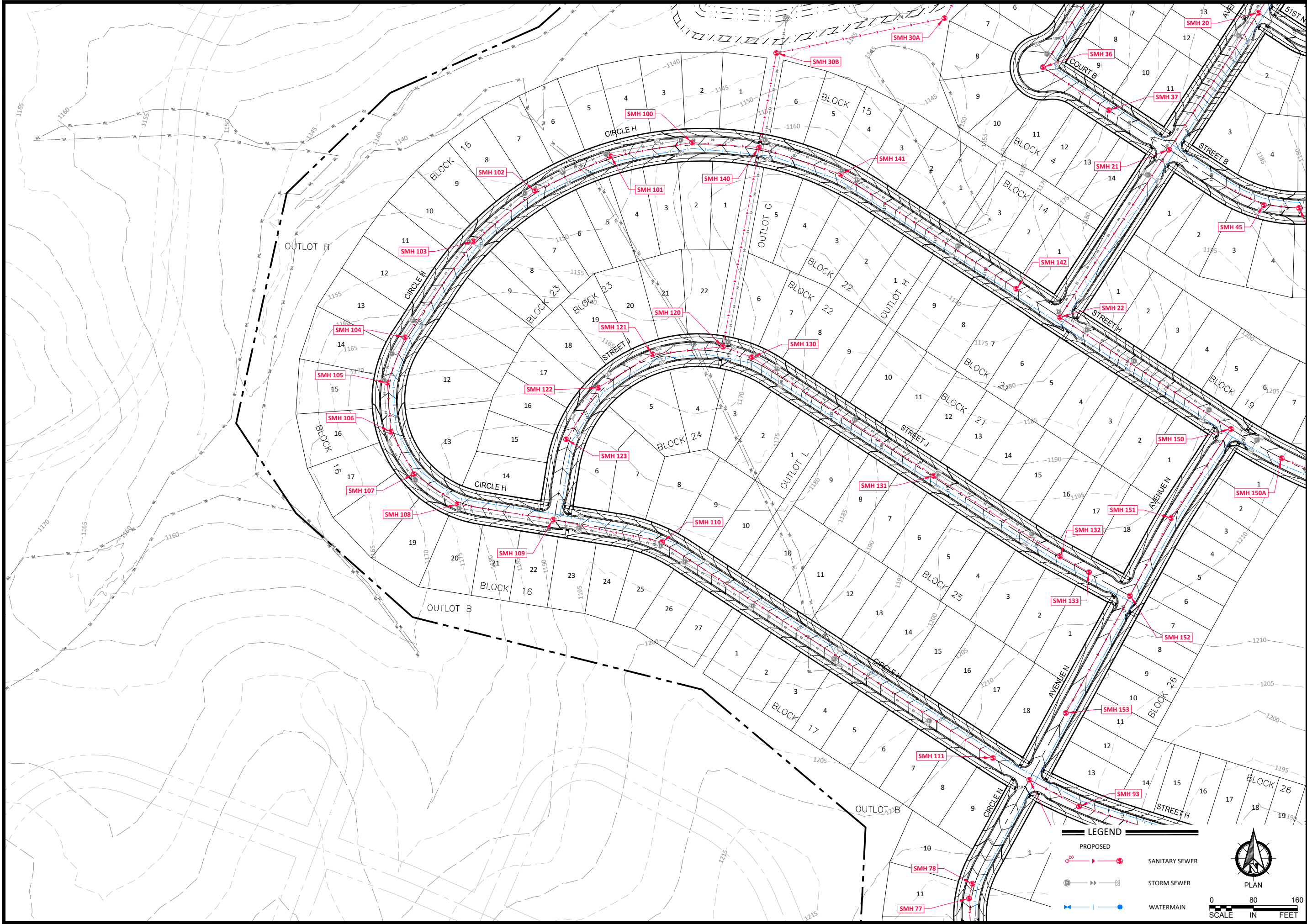
DATE: 05/14/2025

DRAWN BY: AJA

JOB NUMBER: 149-0001

DWG. FILE: 04-UTILITIES-PEBBLE-CREEK

SHEET 2 OF 15



PH. NO. 507-634-4505
PLANS@WSE.ENGINEERING
www.wse.engineering

KASSON OFFICE
P.O. BOX 100
33 B E VETERANS
MEMORIAL HIGHWAY
KASSON, MN 55944

ROCHESTER OFFICE
1765 RESTORATION
ROAD SW
ROCHESTER, MN 55902

I hereby certify that this
plan, specification or report
was prepared by me or under
my direct supervision and
that I am a duly Licensed
Professional Engineer under
the laws of the State of
Minnesota.

Tyler Mandler
59714 05/14/2025
Number Date

PRELIMINARY

NOT FOR

CONSTRUCTION

SANITARY & WATER - SHEET 2

PEBBLE CREEK

ROCHESTER MINNESOTA

SCALE: AS SHOWN

DATE: 05/14/2025

DRAWN BY: AJA

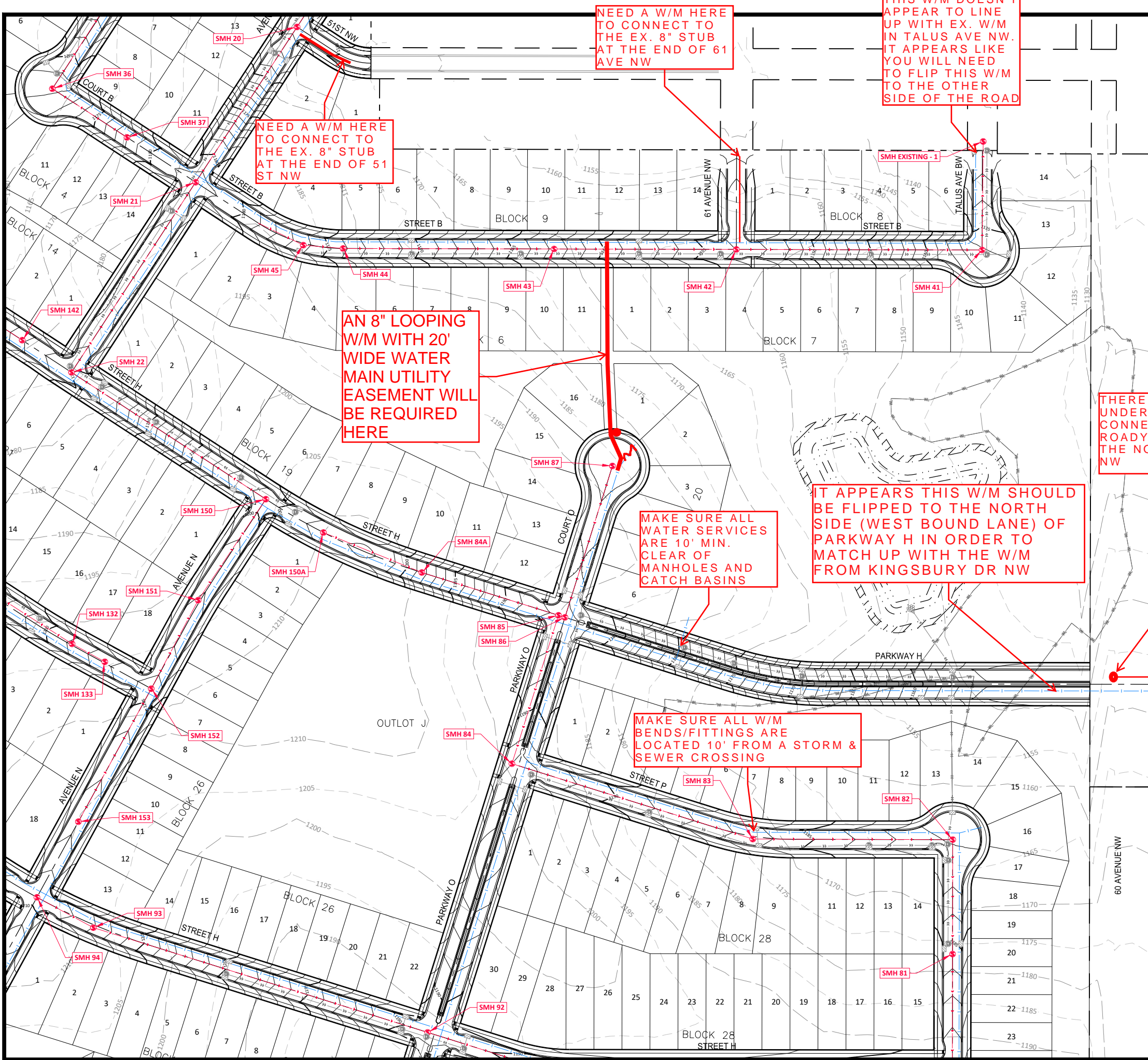
JOB NUMBER: 149-0001

DWG. FILE: 04-UTILITIES-PEBBLE-CREEK

SHEET 3 OF 15

04-UTILITIES-PEBBLE-CREEK.dwg

5/14/2025 11:46:19 AM



NEED A W/M HERE
TO CONNECT TO
THE EX. 8" STUB
AT THE END OF 61
AVE NW

NEED A W/M HERE
TO CONNECT TO
THE EX. 8" STUB
AT THE END OF 51
ST NW

THIS W/M DOESN'T
APPEAR TO LINE
UP WITH EX. W/M
IN TALUS AVE NW.
IT APPEARS LIKE
YOU WILL NEED
TO FLIP THIS W/M
TO THE OTHER
SIDE OF THE ROAD

AN 8" LOOPING
W/M WITH 20'
WIDE WATER
MAIN UTILITY
EASEMENT WILL
BE REQUIRED
HERE

MAKE SURE ALL
WATER SERVICES
ARE 10' MIN.
CLEAR OF
MANHOLES AND
CATCH BASINS

IT APPEARS THIS W/M SHOULD
BE FLIPPED TO THE NORTH
SIDE (WEST BOUND LANE) OF
PARKWAY H IN ORDER TO
MATCH UP WITH THE W/M
FROM KINGSBURY DR NW

THERE IS AN EX. 12" DIP W/M CROSSING
UNDER 60TH AVE WITH A FIRE HYDRANT
CONNECTED ON THE WEST SIDE OF THE
ROADWAY. THE 12" W/M IS LOCATED IN
THE NORTHERN HALF OF KINGSBURY DR
NW

MAKE SURE ALL W/M
BENDS/FITTINGS ARE
LOCATED 10' FROM A STORM &
SEWER CROSSING

LEGEND

PROPOSED	
	SANITARY SEWER
	STORM SEWER
	WATERMAIN

PLAN

0 80 160
SCALE IN FEET

PH. NO. 507-634-4505
PLANS@WSE.ENGINEERING
www.wse.engineering

KASSON OFFICE
P.O. BOX 100
33 B E VETERANS
MEMORIAL HIGHWAY
KASSON, MN 55944

ROCHESTER OFFICE
1765 RESTORATION
ROAD SW
ROCHESTER, MN 55902

I hereby certify that this
plan, specification or report
was prepared by me or under
my direct supervision and
that I am a duly Licensed
Professional Engineer under
the laws of the State of
Minnesota.

Tyler Mandler
59714 05/14/2025
Number Date

PRELIMINARY

NOT FOR

CONSTRUCTION

SANITARY & WATER - SHEET 3

PEBBLE CREEK

ROCHESTER MINNESOTA

SCALE: AS SHOWN

DATE: 05/14/2025

DRAWN BY: AJA

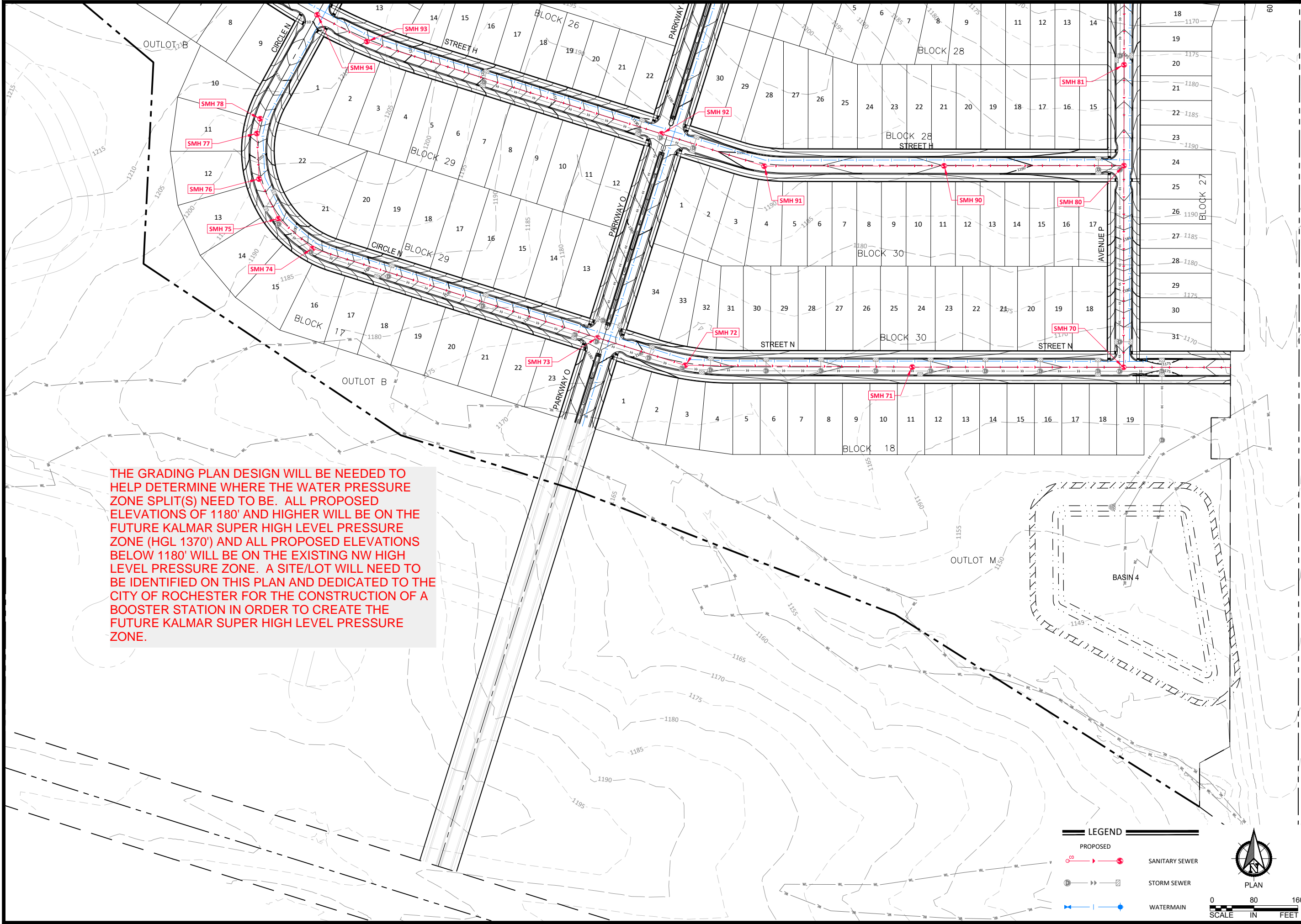
JOB NUMBER: 149-0001

DWG. FILE: 04-UTILITIES-PEBBLE-CREEK


SHEET 4 OF 15

04-UTILITIES-PEBBLE-CREEK.dwg

5/14/2025 11:46:01 AM



THE GRADING PLAN DESIGN WILL BE NEEDED TO HELP DETERMINE WHERE THE WATER PRESSURE ZONE SPLIT(S) NEED TO BE. ALL PROPOSED ELEVATIONS OF 1180' AND HIGHER WILL BE ON THE FUTURE KALMAR SUPER HIGH LEVEL PRESSURE ZONE (HGL 1370') AND ALL PROPOSED ELEVATIONS BELOW 1180' WILL BE ON THE EXISTING NW HIGH LEVEL PRESSURE ZONE. A SITE/LOT WILL NEED TO BE IDENTIFIED ON THIS PLAN AND DEDICATED TO THE CITY OF ROCHESTER FOR THE CONSTRUCTION OF A BOOSTER STATION IN ORDER TO CREATE THE FUTURE KALMAR SUPER HIGH LEVEL PRESSURE ZONE.



PH. NO. 507-634-4505
PLANS@WSE.ENGINEERING
www.wse.engineering

KASSON OFFICE
P.O. BOX 100
33 B E VETERANS
MEMORIAL HIGHWAY
KASSON, MN 55944

ROCHESTER OFFICE
1765 RESTORATION
ROAD SW
ROCHESTER, MN 55902

I hereby certify that this plan, specification or report was prepared by me or under my direct supervision and that I am a duly Licensed Professional Engineer under the laws of the State of Minnesota.

Tyler Mandler
59714 05/14/2025
Number Date

PRELIMINARY

NOT FOR

CONSTRUCTION

SANITARY & WATER - SHEET 4

PEBBLE CREEK

ROCHESTER MINNESOTA

SCALE: AS SHOWN

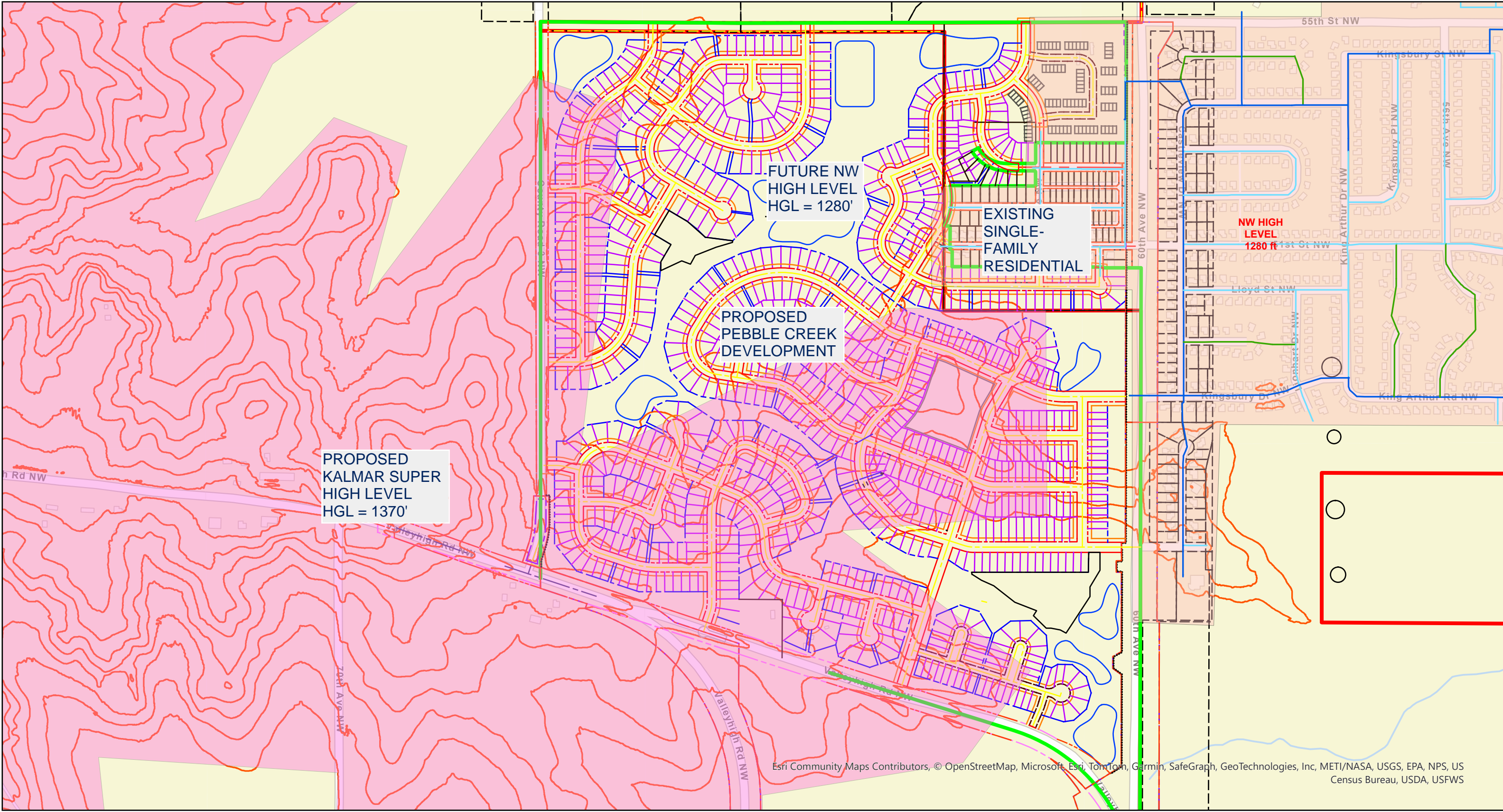
DATE: 05/14/2025

DRAWN BY: AJA

JOB NUMBER: 149-0001

DWG. FILE: 04-UTILITIES-PEBBLE-CREEK

SHEET 5 OF 15



Future NW Pressure Zones
Pebble Creek Elevation 1180 plus
10' contours
Date Saved: 3/21/2025

NOTE: LIMITS OF FUTURE & PROPOSED
PRESSURE ZONES ARE APPROXIMATE AND
CAN BE IMPACTED BY FINAL GRADE.

